

Used MacDonald Steel Reverse Air Dust Collector

RA9.0-140-108 Built 2004

Filter media : 6” dia x 108” lg Qty bags 140

1976 sq. ft of filter media approx. 12,000 – 16,000 cfm

c/w 2 x 11” inlet , short structural support, ladder and platform

Continuous operating, self cleaning filter unit.

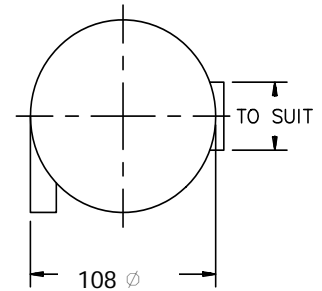
Price as is \$ 20,000.00



9' 0" Reverse Air Collector/Filter

CFM Capacities

MODEL	PRODUCT NO	FILTER SQR FT	CFM CAPACITIES						
			AIR TO CLOTH RATIOS						
			4:1	5:1	6:1	7:1	8:1	9:1	10:1
RA-9.0-140-48	1189DG01	878	3512	4390	5268	6146	7024	7902	8780
RAW-9.0-112-48	1582DG01	702	2808	3510	4212	4914	5616	6318	7020
RA-9.0-140-60	1189DG02	1098	4392	5490	6588	7686	8784	9882	10980
RAW-9.0-112-60	1582DG02	878	3512	4390	5268	6146	7024	7902	8780
RA-9.0-140-72	1189DG03	1317	5268	6585	7902	9219	10536	11853	13170
RAW-9.0-112-72	1582DG03	1053	4212	5265	6318	7371	8424	9477	10530
RA-9.0-140-84	1189DG04	1537	6148	7685	9222	10759	12296	13833	15370
RAW-9.0-112-84	1582DG04	1229	4916	6145	7374	8603	9832	11061	12290
RA-9.0-140-96	1189DG05	1756	7024	8780	10536	12292	14048	15804	17560
RAW-9.0-112-96	1582DG05	1404	5616	7020	8424	9828	11232	12636	14040
RA-9.0-140-108	1189DG06	1976	7904	9880	11856	13832	15808	17784	19760
RAW-9.0-112-108	1582DG06	1580	6320	7900	9480	11060	12640	14220	15800
RA-9.0-140-120	1189DG07	2195	8780	10975	13170	15365	17560	19755	21950
RAW-9.0-112-120	1582DG07	1756	7024	8780	10536	12292	14048	15804	17560
RA-9.0-140-132	1189DG08	2415	9660	12075	14490	16905	19320	21735	24150
RAW-9.0-112-132	1582DG08	1932	7728	9660	11592	13524	15456	17388	19320
RA-9.0-140-144	1189DG09	2634	10536	13170	15804	18438	21072	23706	26340
RAW-9.0-112-144	1582DG09	2107	8428	10535	12642	14749	16856	18963	21070



MODEL	WGT (lbs)	A	B	C	D	E
RA-9.0-140-48	5500	96	48	8	14	192
RAW-9.0-112-48	5407					
RA-9.0-140-60	5600	96	60	8	14	204
RAW-9.0-112-60	5504					
RA-9.0-140-72	5700	96	72	8	14	216
RAW-9.0-112-72	5602					
RA-9.0-140-84	6200	96	84	8	26	240
RAW-9.0-112-84	6074					
RA-9.0-140-96	6400	96	96	8	26	252
RAW-9.0-112-96	6248					
RA-9.0-140-108	6700	108	108	8	26	276
RAW-9.0-112-108	6532					
RA-9.0-140-120	7200	120	120	8	38	312
RAW-9.0-112-120	7018					
RA-9.0-140-132	7500	132	132	8	38	336
RAW-9.0-112-132	7301					
RA-9.0-140-144	7800	144	144	8	38	360
RAW-9.0-112-144	7584					

